



**Washington 10**

# Washington 10 Storage EBB User Guide

## Table of Contents

Subject	Page
System Overview	3-4
Our Webpage	5
Logging On - Password Rules	6
Main Menu Items	7-8
Submitting Nominations - W10 Contract Numbering Convention	9
Storage Injection Nomination -End Date of Nominations -Error Analysis Tips	10
View / Edit Nominations	11
Edit a Nomination	12
Hub Services Explained	13-14
Submit a Hub Nomination	15-16

Subject	Page
View Point Quantity	17-18
Invoicing Invoice Retrieval	19
View Contract	20-21
Notices	22
Reduction Reason Codes	23
Download Data -From within the past 35 days only	24
Reports	25-26
Help Logging Off	27

# Natural Gas Inventory (NGI) Overview

NGI is the electronic nomination and storage tracking system utilized by W-10 Storage and its customers since April 1, 2004. Latitude Technology has developed NGI to help you enter nominations, change nominations, view scheduled quantities, check inventory levels and other storage transactions. NGI is a very streamlined, "user-friendly" nom system specifically designed to accommodate storage transactions.

NGI is Internet-based, meaning that it is not "loaded" onto your computer, as some older Electronic Bulletin Boards (EBBs) were. The program runs on a server on the Internet. To access the program, all you need is a standard Internet browser, such as Netscape Navigator or Microsoft Internet Explorer (see "System Requirements" for a list of the correct versions of these browsers). NGI can be accessed from any computer with an Internet connection. You can access NGI from your computer at work, from your laptop, or your computer at home.

You can move between screens, or navigate around NGI by clicking on highlighted text or links. You can also use the "Back" and "Forward" buttons on your browser to move to previously visited pages. For example, if you find you are at a screen you didn't intend on viewing, clicking on the "Back" button will return you to your previous screen.

## About Nominations

The Gas Day is from 09:00 AM Central Time (CT) to 09:00 AM CT.

### W10 Nomination Deadlines:

Timely: 1:00 PM Central Time (CT)

Intraday: 5:00 PM CT the day of flow.

(Intraday nominations are able to be entered immediately following the timely deadline until 5 PM CT the day of flow.)

Nominations on NGI are entered using a "Pathed" model, in other words, by specifying a Storage Contract, Beginning and Ending Dates/Times, Receipt information (quantity, upstream entities, as applicable) or Delivery information (quantity, downstream entities, as applicable).

Once a nomination is entered by either the Storage Operator or a Customer, it is available for viewing and editing by the Operator or the Customer at any time up to and including the day of flow. After the flow date, noms are editable only by the Operator.

For multi-day nominations (say, for example, a nomination for an entire month), NGI takes the nomination information and breaks it into daily "buckets". Each day of the nomination can then be edited without effecting the rest of the month's nominations.

For example, prior to flow day, a Customer enters a nomination for 10,000 MMBTUs per day beginning on Day 1 at 9:00am and continuing through Day 20 at 9:00am. NGI takes that information and creates 19 daily buckets. If the Customer then decides on Day 7 to change the flow on Day 9 to 11,000 MMBTUs, the Customer edits the nomination for Day 9, changing the volume to 11,000. The volumes on Day 8 and Day 10 remain at the original rate of 10,000.

## About Inventories and Fuel

Storage inventories are based on daily scheduled quantities and the contract fuel percentage. Specifically, NGI updates Customer inventories each night, using that day's scheduled quantities to update each contract inventory as follows:

New Customer Inventory = Previous Customer Inventory + Scheduled Quantity - Fuel Quantity.

Fuel is applied by NGI in the following manner:

- For injections, the Injection Fuel Rate provided for a given contract is applied to the scheduled quantity to produce the Fuel Quantity. The Fuel Quantity is subtracted from the scheduled quantity and the net result is added to the contract inventory.
- For withdrawals, the Withdrawal Fuel Rate provided for a given contract is applied to the scheduled quantity to produce the Fuel Quantity. The Fuel Quantity *and* the scheduled quantity are then subtracted from the contract inventory.

NGI uses the following sign conventions:

- +' or positive numbers represent injections, or flows coming into the storage facility.
- ' or negative numbers represent withdrawals, or flows leaving the storage facility.

## Access to NGI

When Washington 10 enters into a customer with a new shipper, the shipper receives a Customer Information Form. On this form we ask the Shipper to provide all the information we need to prepare the written contract: legal company name and address, DUNS #, where incorporated, and contact information for nominations, marketing, accounting, and contract administration. This form also instructs W10 to set up NGI User IDs and Passwords as “read-only” or “full access”. Full access gives nom entry capability.

## Logging In

To log in to NGI, go to the home page of DTE Gas Storage: [www.dtegasstorage.com](http://www.dtegasstorage.com)

# Our Webpage: [www.dtegasstorage.com](http://www.dtegasstorage.com)



## Gas Midstream Services

Home | MichCon Storage & Transportation | MichCon Pipeline | **DTE Gas Storage** | DTE Pipeline

Our Services  
 ▶ Notices  
 Contact Us  
 Forms  
 Tariffs



**DTE Gas Storage**  
 One of the nation's  
**Log into NGI by clicking "Customer Login"**  
 Northeast markets.

replay ▶

**Customer Activity Website**  
 Select your login:  
[Customer Login](#)  
[Operator Login](#)  
[Point Operator Login](#)  
[Plant Operator Login](#)

You must be an authorized user to access this private network.

New notices are posted here.  
 Older notices are available from the "Notices Link" above.

### Important Updates

#### Fuel Management Changes (February 19, 2010)

Effective March 1, 2010, Washington 10 is making changes to the way v

[More](#)

#### Construction and Maintenance Update (December 08, 2009)

Construction and maintenance activities at W10 have been completed back to normal as of December 7...

[More](#)

#### Update on Wheeling (December 08, 2009)

W10 continues to monitor availability of IT Wheeling from the W10-MichCon point to the W10-Vector point...

[More](#)

Our fuel rates are updated and posted here with the effective date.

Click "Historic Fuel Rates" to see rates from April 2004 to the present.

### Washington 10 Fuel Rates

Transaction	Rates Effective March 3
Injection	1.00%
Withdrawal	0.40%
Wheel from Hub to Interconnect	0.00%

[Historic Fuel Rates](#)  
 (April 2004 to date)

## Washington10 Storage

### Nominations

- Submit Nominations
- View Nominations
- View Scheduled Qty
- View Point Qty

### Flowing Gas

- Auth to Post Imbalance
- Posted Imbalances
- Req Imbalance Trade
- Measurement
- Inventory

### Invoicing

- Current Transportation
- Invoices
- Current Sales Invoices

### Capacity Release

- Post Offer
- Post Bid
- View Offers Bids Awards

### Contracts

- View Contracts

### Notices

- Critical
- Non-critical

### Misc

- Reduction Reasons
- Download Options
- Reports
- Site Map

HELP

LOG OFF

# Logging In

## Customer Login

Username:

Password:

### Password Rules:

- 8-20 characters long
- Case sensitive
- Must contain at least one alpha character (a-z, A-Z)
- Must contain at least one number (0-9)
- Must contain at least one special character (@, #, \$, %, etc.)

Do not use the "Remember Password" feature of any application.

Do not write passwords down and store them anywhere in your office.

Do not store passwords in a file on any computer system without encrypting that file.

Do not share accounts.

If an account or password is suspected of being compromised, request a new account and/or password.

## **Washington10 Storage**

### **Nominations**

- Submit Nominations
- View Nominations
- View Scheduled Qty
- View Point Qty

### **Flowing Gas**

- Auth to Post Imbalance
- Posted Imbalances
- Req Imbalance Trade
- Measurement
- Inventory

### **Invoicing**

- Current Transportation
- Invoices
- Current Sales Invoices

### **Capacity Release**

- Post Offer
- Post Bid
- View Offers Bids Awards

### **Contracts**

- View Contracts

### **Notices**

- Critical
- Non-critical


### **Misc**

- Reduction Reasons
- Download Options
- Reports
- Site Map

**HELP**

**LOG OFF**

## Main Menu



The main menu is a fixture on every screen, making navigation easy.

## Washington10 Storage

### Nominations

- Submit Nominations
- View Nominations
- View Scheduled Qty
- View Point Qty

### Flowing Gas

- Auth to Post Imbalance
- Posted Imbalances
- Req Imbalance Trade
- Measurement
- Inventory

### Invoicing

- Current Transportation
- Invoices
- Current Sales Invoices

### Capacity Release

- Post Offer
- Post Bid
- View Offers Bids Awards

### Contracts

- View Contracts

### Notices

- Critical
- Non-critical

### Misc

- Reduction Reasons
- Download Options
- Reports
- Site Map

HELP

LOG OFF

W10 does not offer these services:

- Imbalance Trading
- Individualized Measurement
- Capacity Release

# Submit Nominations

## Nominations

- Submit Nominations ←
- View Nominations
- View Scheduled Qty
- View Point Qty

## Flowing Gas

- Auth to Post Imbalance
- Posted Imbalances
- Req Imbalance Trade
- Measurement
- Inventory

## Invoicing

- Current Transportation
- Invoices
- Current Sales Invoices

## Capacity Release

- Post Offer
- Post Bid
- View Offers Bids Awards

## Contracts

- View Contracts

## Notices

- Critical
- Non-critical

## Misc

- Reduction Reasons
- Download Options
- Reports
- Site Map

**HELP**

**LOG OFF**

Select the Transaction Type and the Contract/Customer for the nomination, then press the 'Continue' button.

Select the transaction type and contract from the drop-down lists

Transaction Type	Contract/Customer
Select a Transaction Type	Select a Contract/Customer
Select a Transaction Type	Select a Contract/Customer
Storage Injection	1111-A** Mountain Pwr
Storage Withdrawal	05055 ** Mountain Pwr
Authorized Injection Overrun	
Authorized Withdrawal Overrun	
Park	
Park Withdrawal	
Loan	
Loan Payback	
Hub Sell	
Wheel To Hub	
Wheel From Hub	
Storage To Hub	
Hub To Storage	
Wheel	

In this example, we are submitting a storage injection nomination on contract 1111-A, for Mountain Pwr.  
Click "continue".

Select the Transaction Type and the Contract/Customer for the nomination, then press the 'Continue' button.

Transaction Type	Contract/Customer
Storage Injection	1111-A ** Mountain Pwr

Continue

Cancel

### Helpful Hint:

W10 Contract Numbering

Storage Contracts: 01000 – 01999

PALS Contracts: 03000 – 03999

Hub Service Contracts: 05000 – 05999

# Storage Injection Nomination

## Submit Nomination

Extend Your End Date as needed. A full gas day is the 24 hours from 9 AM to 9 AM. For example, the gas day March 31 would be end-dated April 1

<b>General Info</b>			
Operator <b>washington10</b>	Customer Mountain Power	Contract <b>1111-A</b>	
<b>Dates and Times</b>			
Beg Date 03/04/2010	Beg Time 09:00 CCT 24hr (hh:mm)	End Date 03/05/2010	End Time 09:00 CCT 24hr (hh:mm)
<b>Receipt Info</b>			
Receipt Location W10_MichCon W10_MichCon W10_Vector	Upstream Entity  Upstream Contract 	Receipt Rank 1	
<b>Other Info</b>			
Package ID <input type="text"/>	Nom Tracking Number <input type="text"/>	Transaction Type Storage Injection	
<b>Fuel and Rate Info</b>			
<input checked="" type="radio"/> Use standard Storage Injection rate: <input type="button" value="Save Nomination"/> <input type="button" value="Reset"/> <input type="button" value="Cancel"/> override rate: \$ <input type="text"/>			
Fuel Percentage: 1 Fuel Amount: 0 Inventory Amount: 0			

Required Fields

Optional Fields

Show nom analysis

If your nomination errors out, check "show nom analysis" and re-save the nomination. A long stream of information will appear detailing the cause of the error.

For instance, if the system says a base-load nom could not be accepted because the Maximum Storage Quantity was exceeded, nom analysis will tell you the day on which the MSQ was first exceeded.

**Nominations**

- Submit Nominations
- View Nominations
- View Scheduled Qty
- View Point Qty

**Flowing Gas**

- Auth to Post Imbalance
- Posted Imbalances
- Req Imbalance Trade
- Measurement
- Inventory

**Invoicing**

- Current Transportation Invoices
- Current Sales Invoices

**Capacity Release**

- Post Offer
- Post Bid
- View Offers Bids Awards

**Contracts**

- View Contracts

**Notices**

- Critical
- Non-critical

**Misc**

- Reduction Reasons
- Download Options
- Reports
- Site Map

**HELP**

**LOG OFF**

Comments? Email us

# View / Edit Nominations

After successfully saving a nomination this screen comes up.  
Let's click on "View/Edit Nominations"

The nomination has been received.

Enter Another Nomination

View/Edit Nominations

Copy Nom For The Next Day

The NGI calendar for the current month appears.  
Clicking on a day brings up all of your nominations for that day (see next page).

Click a day on the calendar to view noms.  
Go to another month or year by clicking the arrows in the calendar heading.

<<<	<	March 2011	>	>>>		
Sun	Mon	Tue	Wed	Thu	Fri	Sat
		1	2	3	4	5
6	7	8	9	10	11	12
13	14	15	16	17	18	19
20	21	22	23	24	25	26
27	28	29	30	31		

Truncate long fields on the report

## View / Edit Nominations

Click on a link in the Nom# column to edit a nomination.

Note: The code beside the Nom# indicates the nom cycle:

**T:** Timely **E:** Evening **I1:** Intraday1 **I2:** Intraday2 **I3:** Post-Intraday2 **P:** Partial-day

Assoc Nom #	Nom #	Contract	Receipt Location	Receipt Qty	Upstream Party	Upstream Contract	Delivery Location	Delivery Qty	Downstream Party	Downstream Contract	Fuel Qty
2004-02-09 10:50:50	<a href="#">4761</a> <b>T</b>	1111-A		0			Gulfgate	1100	DnUnder	333222111	0
2004-03-16 13:11:52	<a href="#">4826</a> <b>E P</b>	1111-A	Gulfgate	5000	11111	22222		0			1
Totals for this contract:							Next Day	1100			1
Totals for the facility:				Previous Day				1100			1

To edit a nomination, click on the Nom ID.

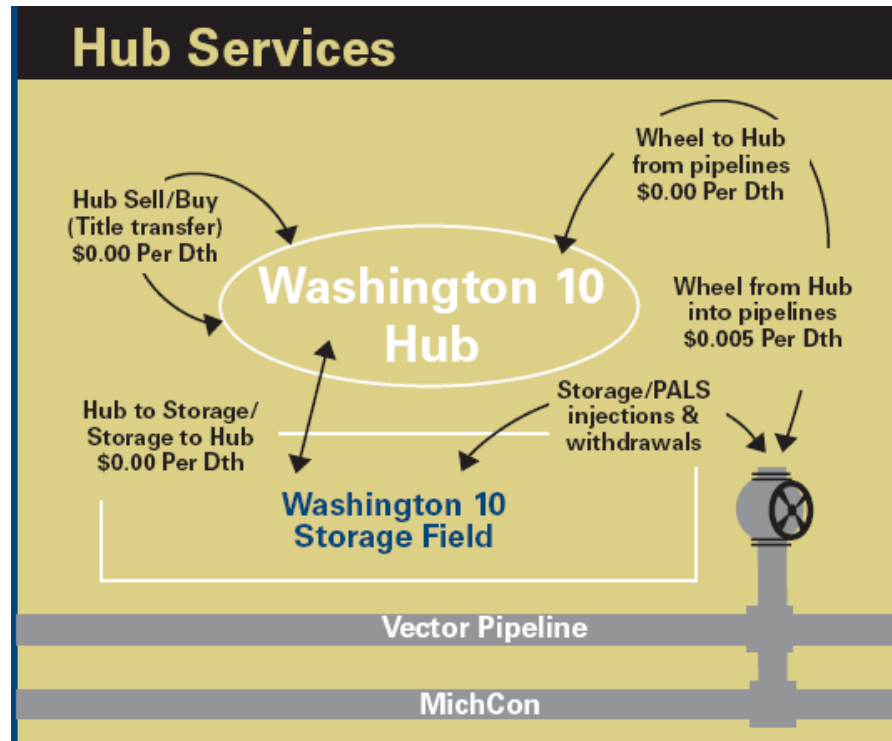
All nomination summary screens contain a link to the nom.

# Washington 10 Hub Services

Washington 10's Hub Services transactions enable gas to be bought and sold at the W10 Hub, or moved between contracts (i.e., from Storage to PALS, etc.). Gas may also be wheeled between the Hub and an interconnect (MichCon or Vector), There is a charge of \$0.005/ dth for "Wheel From Hub" transactions (where gas is received at the Hub and delivered to MichCon or Vector).

All transactions involving the Hub must be nominated on a Hub Service contract. When a Hub nomination includes a withdrawal or injection from / to W10 Storage (including parks and loans), NGI will automatically generate the corresponding withdrawal or injection nomination for you.

The Hub Service Agreement is a customer-initiated contract. A blank hub contract form, and instructions for submission is available on [dtegasstorage.com](http://dtegasstorage.com) under "Forms" on the left navigation panel.



# Washington 10 Hub Nominations

Select the Transaction Type and the Contract/Customer for the nomination, then press the 'Continue' button.

The screenshot shows a web form for nominations. It has two dropdown menus: 'Transaction Type' and 'Contract/Customer'. The 'Transaction Type' dropdown is open, showing a list of options: 'Select a Transaction Type', 'Storage Injection', 'Storage Withdrawal', 'Authorized Injection Overrun', 'Authorized Withdrawal Overrun', 'Park', 'Park Withdrawal', 'Loan', 'Loan Payback', 'Hub Sell', 'Wheel To Hub', 'Wheel From Hub', 'Storage To Hub' (highlighted in blue and circled in red), 'Hub To Storage', and 'Wheel'. To the right of the dropdown are 'Continue' and 'Cancel' buttons. A callout box on the right contains the text: 'Always use your Hub Contract when any part of the transaction is taking place at the W10 Hub location. If the transaction requires a withdrawal or injection to storage the system will generate that nom for you ... automatically!'.

## What the Hub Transaction Types mean:

- **Hub Sell and Hub Buy** – Transfers title to the gas at the W10 Hub
- **Wheel To Hub** – Receipt of gas at MichCon or Vector, Delivery to the W10 Hub
- **Wheel From Hub** – Receipt of gas at the Hub, Delivery to MichCon or Vector
- **Storage to Hub** – Receipt of gas from a Storage or PALS contract and delivery to the Hub (system generates the Storage Withdrawal nom for you).
- **Hub to Storage** – Receipt of gas at the W10 Hub, Delivery to Storage for Injection to PALS or Storage contract. (system generates the Storage Injection nom for you).

# Washington 10 Hub

## Example of a Storage to Hub Nomination

Select the Transaction Type and the Contract/Customer for the nomination, then press the 'Continue' button.

Transaction Type	Contract/Customer
Storage To Hub	05044 Gulfgate Power

Continue

Cancel

# Submit Nomination

<b>General Info</b>	Operator <b>Washington10</b>	Customer <b>Gulfgate Power</b>	Contract <b>05044</b>
---------------------	---------------------------------	-----------------------------------	--------------------------

<b>Dates and Times</b>	Beginning Date 06/14/2007	Beg Time CCT 09:00 <small>24hr (hh:mm)</small>	Ending Date 06/15/2007	Ending Time 09:00 CCT <small>24hr (hh:mm)</small>
------------------------	------------------------------	--	---------------------------	---

<b>Receipt Info</b>	Receipt Location Storage	Upstream Entity Gulfgate Power	Receipt Rank 1
Storage To Hub Qty	Upstream Contract Select a Contract		

Select the contract the gas is coming from. It can come from any valid contract; and can be gas that is stored, parked, or loaned.

Note !

<b>Delivery Info</b>	Delivery Location W10Hub	Downstream Contract 05044	Delivery Rank 1
Storage To Hub Qty	Downstream Contract 05044		

When you Save the Nomination, NGI will automatically create a corresponding nom on the contract selected in "Upstream Contract". The transaction type [here](#) must be a valid selection under the Upstream Contract. (e.g., if you select a PALS Loan contract the trans type [here](#) is "Loan")

<b>Other Info</b>	Package ID	Nom Tracking Number	Transaction Type Storage To Hub Auto-nom Trans Type Storage Withdrawal
-------------------	------------	---------------------	---

Optional Fields

<b>Fuel Info</b>	Fuel Percentage: 0	Fuel Amount: 0	Inventory Amount: 0
------------------	--------------------	----------------	---------------------

Save Nomination    Reset    Cancel

**Nominations**

- Submit Nominations
- View Nominations
- View Scheduled Qty
- View Point Qty ←

**Flowing Gas**

- Auth to Post Imbalance
- Posted Imbalances
- Req Imbalance Trade
- Measurement
- Inventory

**Invoicing**

- Current Transportation Invoices
- Current Sales Invoices

**Capacity Release**

- Post Offer
- Post Bid
- View Offers Bids Awards

**Contracts**

- View Contracts

**Notices**

- Critical
- Non-critical

**Misc**

- Reduction Reasons
- Download Options
- Reports
- Site Map

**HELP**

**LOG OFF**

Comments? Email us

# View Point Quantity

Click a day on the calendar to view noms (Interconnect Qtys).  
Go to another month or year by clicking the arrows in the calendar heading.

<<< < March 2010 > >>>						
Sun	Mon	Tue	Wed	Thu	Fri	Sat
	1	2	3	4	5	6
7	8	9	10	11	12	13
14	15	16	17	18 *	19	20
21	22	23	24	25	26	27
28	29	30	31			

Truncate long fields on the report

View Point Quantity allows you to view your noms and scheduled quantities and any cuts at all receipt and delivery points for a given day. If you want to see only a specific point use the Nominations History Report option located under "Reports" on the main menu (see page 30).

# View Point Quantity

## Nominated Quantities and Scheduled Quantities by Interconnect.

Click on a link in the Nom# column to edit a nomination.

Note: The code beside the Nom## indicates the nom cycle:

**T:** Timely **E:** Evening **I1:** Intraday1 **I2:** Intraday2 **I3:** Post-Intraday2 **P:** Partial-day

Nom ID	Upstream Party	Upstream Contract	Shipper	Contract	Package ID	Nominated Receipt Quantity	Scheduled Receipt Quantity	Nominated Delivery Quantity	Scheduled Delivery Quantity	Net	Reduction Reason Code
<a href="#">4826</a> <b>E P</b>	11111	22222	Mountain Pwr	1111-A	Optional	5000	4375	0	0		CPR
<a href="#">4828</a> <b>E</b>	11111	22222	Mountain Pwr	1111-A	Optional	5000	5000	0	0		
<a href="#">4781</a> <b>T</b>			Mountain Pwr	1111-A		0	0	1100	1100		
Total nominated for Gulfgate:						10000		1100		8900	
Total scheduled for Gulfgate:							9375		1100	8275	
Total nominated for the facility:						10000		1100		8900	
Total scheduled for the facility:							9375		1100	8275	

In this example, the only Point nominated is “Gulfgate” If there were noms at other interconnect points, you would see a point total for each interconnect for the day, and the total net nominated and scheduled at W10 “facility”

**Nominations**

- Submit Nominations
- View Nominations
- View Scheduled Qty
- View Point Qty

**Flowing Gas**

- Auth to Post Imbalance
- Posted Imbalances
- Req Imbalance Trade
- Measurement
- Inventory

**Invoicing**

- Current Transportation Invoices
- Current Sales Invoices

**Capacity Release**

- Post Offer
- Post Bid
- View Offers Bids Award

**Contracts**

- View Contracts

**Notices**

- Critical
- Non-critical

**Misc**

- Reduction Reasons
- Download Options
- Reports
- Site Map

**HELP**

**LOG OFF**

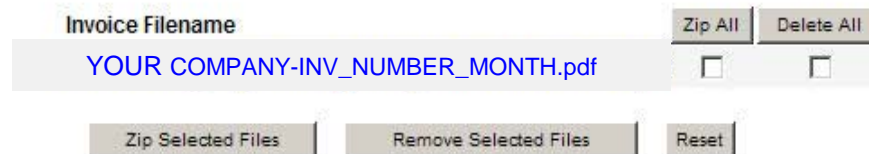
# Invoicing

Invoices are posted on the 8<sup>th</sup> of each month and are due on the 20<sup>th</sup>. Your designated accounting contact(s) will receive an email notification when the invoice has been posted to NGL.



## Saved Invoices for February 2010

- Click a filename below to view the invoice.
- Right-click and select 'Save Target As' to download a single file to your system.
- To remove files, check the 'Delete' check-boxes and click the 'Remove Selected Files' button.
- To download a large number of files, check the 'Zip' check-boxes, click the 'Zip Selected Files' button, then download the new .zip file.



**Washington10  
Storage**

**Nominations**

- Submit Nominations
- View Nominations
- View Scheduled Qty
- View Point Qty

**Flowing Gas**

- Auth to Post Imbalance
- Posted Imbalances
- Req Imbalance Trade
- Measurement
- Inventory

**Invoicing**

- Current Transportation Invoices
- Current Sales Invoices

**Capacity Release**

- Post Offer
- Post Bid
- View Offers Bids Awards

**Contracts**

- View Contracts

**Notices**

- Critical
- Non-critical

**Misc**

- Reduction Reasons
- Download Options
- Reports
- Site Map

**HELP**

**LOG OFF**

Comments? Email us

# View Contract

Select a contract from the drop-down list below, then click the 'Continue' button.

1111-A

You may view a summary for each of your contracts. Just select the contract and click "continue".

# View Contract

## Contract Summary

### General Information

Contract Number 1111-A	Customer Mountain Pwr	Contract Type Firm
---------------------------	--------------------------	-----------------------

---

### Contract Dates

Effective Date (mm/dd/yy) 08/07/01	Termination Date (mm/dd/yy) 12/16/05
--	--

---

### Contract Quantity Limits

Maximum Storage Quantity: 2000000	Storage Rate: 0.025
-----------------------------------	---------------------

---

### Transaction Types and Rates

Storage Injection:	Yes.	Rate: 0.01	Fuel %: 0.02
Storage Withdrawal	Yes.	Rate: 0.005	Fuel %: 0.02
Authorized Injection Overrun	No.		
Authorized Withdrawal Overrun	No.		
Park	Yes.	Rate: 0.02	Fuel %: 0.02
Park Withdrawal	Yes.	Rate: 0.02	Fuel %: 0.02
Loan	No.		
Loan Payback	No.		
Meter Bounce	Yes.	Rate: 0.0	Fuel %: 0.0
Storage Inventory Cycling	No.		
Wheel	No.		
Dome Swap	Yes.	Rate: 0.0	Fuel %: 0.0

---

This example shows only a portion of the contract data. The remaining portion contains the MDQs for the facility and for each location. The contracts in NGI are do not represent the entire contract parameters. A hard copy of contracts should be available to you from your company's Contract Administrator department.

### Facility MDIQ Ratchets

Ratchet 1: from: -50000 to: 2000000 MDQ: 20000

# Notices

## Washington10 Storage

### Nominations

- Submit Nominations
- View Nominations
- View Scheduled Qty
- View Point Qty

### Flowing Gas

- Auth to Post Imbalance
- Posted Imbalances
- Req Imbalance Trade
- Measurement
- Inventory

### Invoicing

- Current Transportation
- Invoices
- Current Sales Invoices

### Capacity Release

- Post Offer
- Post Bid
- View Offers Bids Awards

### Contracts

- View Contracts

### Notices

Critical

Non-critical

### Misc

- Reduction Reasons
- Download Options
- Reports
- Site Map

HELP

LOG OFF

Notice Type	Posted Date/Time	Notice Effective Date/Time	Notice End Date/Time	Notice Response Date/Time	Subject
Other	03/08/10 16:21	03/08/10 09:00	03/10/10 09:00		Fuel Rate Effective March 10, 2010

Clicking the subject opens the notice in a new window

Effective Gas Day March 10, 2010, Wheel From Hub Transactions will have a fuel rate of 0.45%.

**Nominations**

- [Submit Nominations](#)
- [View Nominations](#)
- [View Scheduled Qty](#)
- [View Point Qty](#)

**Flowing Gas**

- [Auth to Post Imbalance](#)
- [Posted Imbalances](#)
- [Req Imbalance Trade](#)
- [Measurement](#)
- [Inventory](#)

**Invoicing**

- [Current Transportation Invoices](#)
- [Current Sales Invoices](#)

**Capacity Release**

- [Post Offer](#)
- [Post Bid](#)
- [View Offers Bids Awards](#)

**Contracts**

- [View Contracts](#)

**Notices**

- [Critical](#)
- [Non-critical](#)

**Misc**

- [Reduction Reasons](#) ←
- [Download Options](#)
- [Reports](#)
- [Site Map](#)

**HELP**

**LOG OFF**

[Comments? Email us](#)

# Reduction Reason Codes

## Reduction Reason Codes

BMP Quantity reduced due to bumping  
CSP Confirmation Not Conducted by Transportation Service Provider  
CRR Confirmation Not Conducted by Upstream Confirming Party  
NGU Upstream Service Requester Did Not Have the Gas or Submit the Nomination  
CRD Confirmation Not Conducted by Downstream Confirming Party  
NGD Downstream Service Requester Did Not Have the Market or Submit the Nomination  
AOK All Necessary Confirmation Communication Occurred. No Additional Reduction Reason Code Required  
QER Quantity Exceeds MDQ of Associated Contract  
PCC Pipeline Capacity Constraint  
CEB Contract Balancing  
CRI Credit Issues  
FMJ Force Majeure  
PLM Pipeline Maintenance  
CRN Confirmation Response Not Received  
CPR Confirming Party Reduction  
ECM Exceeded Contract MDQ  
EPM Exceeded Point MDQ  
PLC Pipeline Curtailment  
GQS Gas Quality Specifications Not Met  
SRP Storage Ratchet Provision  
PCR Confirming Party's Capacity Constraint at Receipt Location  
PCD Confirming Party's Capacity Constraint at Delivery Location  
PRR Confirming Party Reduction at Receipt Location  
PRD Confirming Party Reduction at Delivery Location  
CRE Capacity Recalled  
EPS Elapsed-Prorated-Scheduled Quantity  
012 No Corresponding Nomination  
013 No Corresponding Nomination at Receipt Location  
014 No Corresponding Nomination at Delivery Location

If your nomination is cut a reduction reason code will appear on the View Point Qty screen in the last column. This is the key to those codes.

**Nominations**

- Submit Nominations
- View Nominations
- View Scheduled Qty
- View Point Qty

**Flowing Gas**

- Auth to Post Imbalance
- Posted Imbalances
- Req Imbalance Trade
- Measurement
- Inventory

**Invoicing**

- Current Transportation Invoices
- Current Sales Invoices

**Capacity Release**

- Post Offer
- Post Bid
- View Offers Bids Awards

**Contracts**

- View Contracts

**Notices**

- Critical
- Non-critical

**Misc**

- Reduction Reasons
- Download Options**
- Reports
- Site Map

**HELP**

**LOG OFF**

## Download Options

This report will download an xls data file. The data will be separated by commas and you will need to import using Excel's "text import wizard"

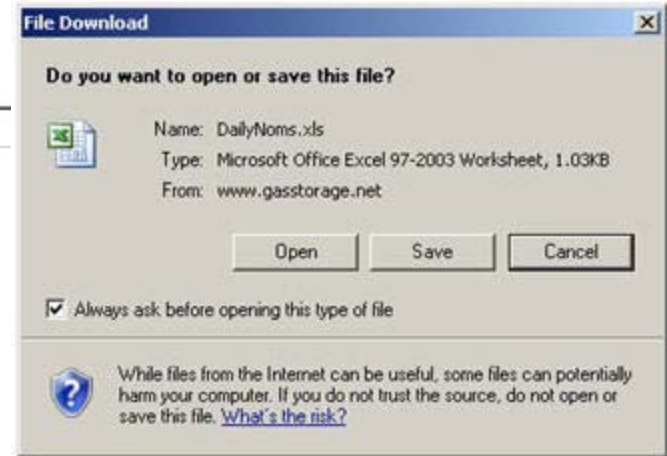
The beginning date of your date range cannot be more than 35 days ago. If you need data for an older timeframe refer to "Custom Reports" under "Reports"

Download nomination or scheduled quantity data for:

- Today (03-18-2010)
- Tomorrow (03-19-2010)
- Yesterday (03-17-2010)
- Month-to-date
- Date Range:  To:

Create Nom Download File

Create Sch Qty Download File



# Reports

Click on a link below to produce a report.

- [Nominations History Report](#)
- [Nominations History Report by Upstream or Downstream Contract](#)
- [Inventory](#)
- [Inventory / MDQ Report](#)
- [Custom Nom Reports](#)

## [Nominations History Report](#)

- 90-day range    - location filter    - contract filter

EXAMPLE: Three days, Contract #1111-A, Gulfgate location

**Nominations History Report.**

Note: The code beside the NomID indicates the nom cycle:

**T:** Timely    **E:** Evening    **I1:** Intraday1    **I2:** Intraday2    **I3:** Post-Intraday2    **P:** Partial-day

Beginning Date	Nom ID	Contract	Receipt Location	Receipt Quantity	Upstream Party	Upstream Contract	Delivery Location	Delivery Quantity	Downstream Party	Downstream Contract	Fuel Qty
03/15/04	4759 <b>T</b>	1111-A		0			Gulfgate	1100	DnUnder	333222111	0
Totals for this contract:				0				1100			0
03/16/04	4760 <b>T</b>	1111-A		0			Gulfgate	1100	DnUnder	333222111	0
Totals for this contract:				0				1100			0
03/17/04	4761 <b>T</b>	1111-A		0			Gulfgate	1100	DnUnder	333222111	0
03/17/04	4826 <b>E P</b>	1111-A	Gulfgate	5000	11111	22222		0			1
03/17/04	4828 <b>E</b>	1111-A	Gulfgate	5000	11111	22222		0			1
Totals for this contract:				10000				1100			2

- Nominations**
  - Submit Nominations
  - View Nominations
  - View Scheduled Qty
  - View Point Qty
- Flowing Gas**
  - Auth to Post Imbalance
  - Posted Imbalances
  - Req Imbalance Trade
  - Measurement
  - Inventory
- Invoicing**
  - Current Transportation Invoices
  - Current Sales Invoices
- Capacity Release**
  - Post Offer
  - Post Bid
  - View Offers Bids Awards
- Contracts**
  - View Contracts
- Notices**
  - Critical
  - Non-critical
- Misc**
  - Reduction Reasons
  - Download Options
  - Reports ←
  - Site Map

**HELP**

**LOG OFF**

Comments? Email us

# Reports (continued)

## Nominations History Report by Upstream or Downstream Contract

- 90-day range      - upstream OR downstream contract filter      - location filter
- option to include scheduled quantities as well as nominated quantities.

## Inventory Report

### **-Existing Inventory**

- 90-day range      - contract filter (hold ctrl key and select contracts or select "all")
- Scheduled volumes are linked to the nom data, click for a quick view

### **-Projected Inventory**

- 3, 7, 10, 30, 60, 90, and 180 days into the future

## Inventory/MDQ Report

- Existing Inventory, MDIQ, MDWQ for the current gas day

## Custom Reports

- Design custom reports      - save to run again

-Unlimited date-range

-Filters: Contract(s), Date Range, Transaction Type(s), and Interconnect

-Check to include fields: Nom ID, Transaction Type, NomTimeStamp, Intraday, CustomerID, Contract, Gas Day, Beginning Date, Beginning Time, Ending Date, Ending Time, Receipt and/or Delivery Point, Rct and/or Del Priority, Rct and/or Del Inventory Qty, Rct and/or Del Scheduled Qty, Upstream and/or Downstream Party, Upstream and/or Downstream Contract, Up/Down Receipt Rank(s), Confirmed, Fuel Qty, Fuel Percentage, Package ID, NomTracking ID, Comments, Reduction Reason

- Nominations**  
Submit Nominations  
View Nominations  
View Scheduled Qty  
View Point Qty

- Flowing Gas**  
Auth to Post Imbalance  
Posted Imbalances  
Req Imbalance Trade  
Measurement  
Inventory

- Invoicing**  
Current Transportation  
Invoices  
Current Sales Invoices

- Capacity Release**  
Post Offer  
Post Bid  
View Offers Bids Awards

- Contracts**  
View Contracts

- Notices**  
Critical  
Non-critical

- Misc**  
Reduction Reasons  
Download Options  
Reports  
Site Map

**HELP**

**LOG OFF**

Comments? Email us

**Login successful.**  
Select links from the navigation bar.

**Help**

The Help feature contains the answers to frequently asked questions. Please feel free to call Sandy Schmidt at 313-235-1148 for assistance (313) 820-7943 after hours.

**Log Off**

Be sure to log off NGI using the red Log Off button at the bottom of the main menu. This will take you out of the secure NGI site.